

COLORWAY : **LIGHT BLUE**
04C-06-326-LBL



EXTERIOR DETAILS

- 1/4" FLAT FELLED SEAM
- OVERLOCKED W/ 1/4" D.N.

RAW EDGE / DISTRESSED COLLAR
W/ 1/4" S.N. TOP STITCH

TURNBACK PLACKET
W/ S.N. EDGE STITCH
& 1 1/2" TOP STITCH

GRINDING/DISTRESSING
@ ELBOW W/ SELF FABRIC
PATCH UNDER NEATH &
STITCHED DOWN
*PLEASE MOCK-UP
OPTIONS BASED ON
SKETCH*

CHEST PKT W/ FLAP.
PKT BAG TOP STITCHED
TO BODY W/ S.N.

#FVFR-DB-001 27L
SHANK BUTTON

SELF FABRIC 5/8"
DISTRESSED EDGE
WELT PKTS W/
EDGE STITCH &
TONAL BARTACKS
@ ENDS

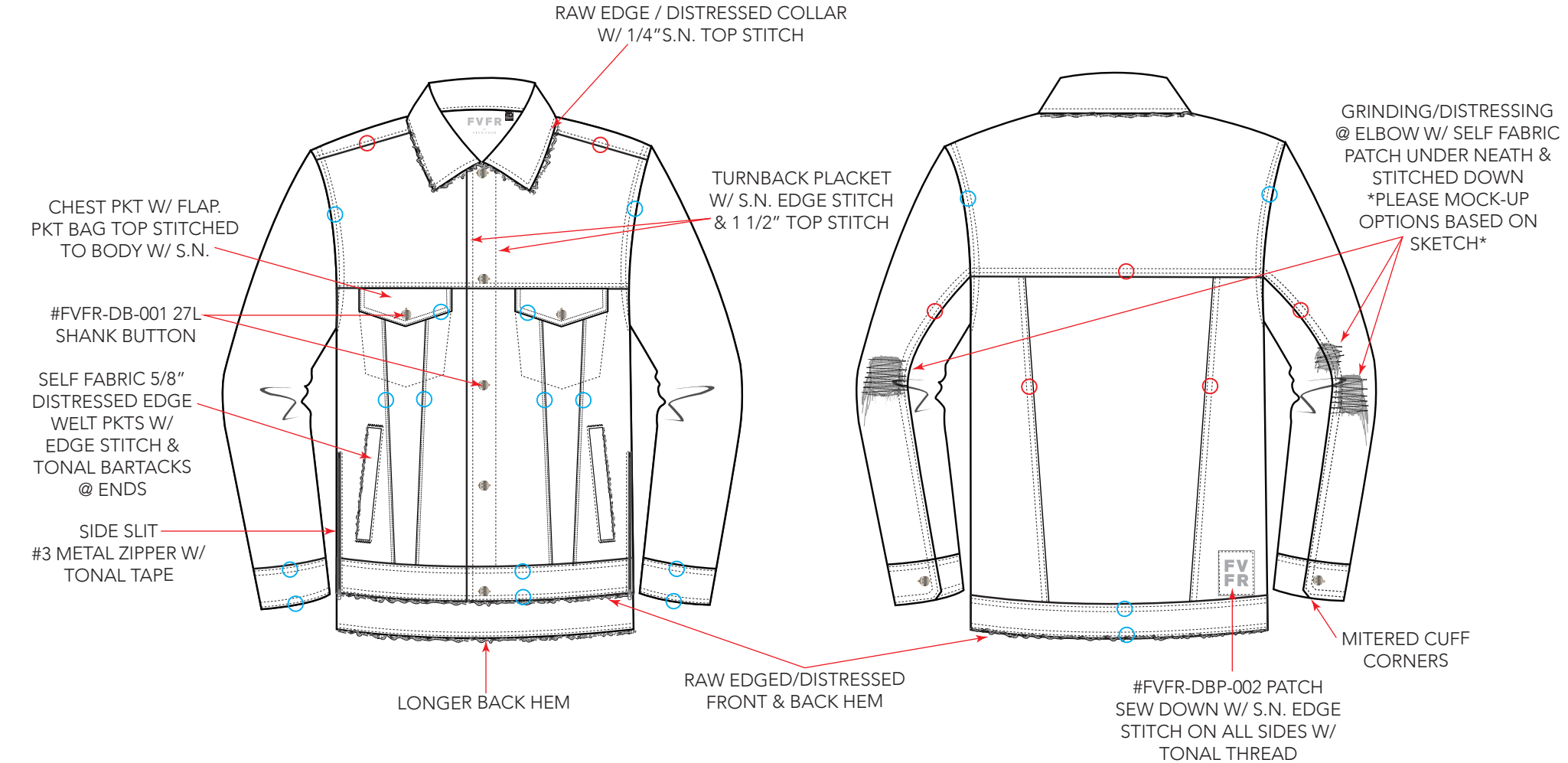
SIDE SLIT
#3 METAL ZIPPER W/
TONAL TAPE

LONGER BACK HEM

RAW EDGED/DISTRESSED
FRONT & BACK HEM

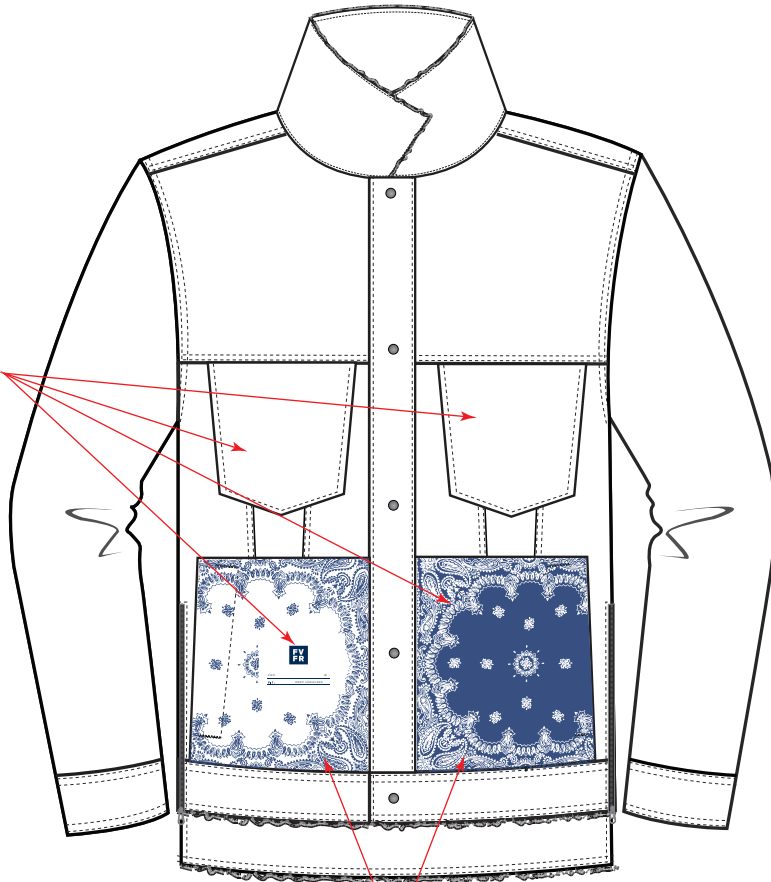
#FVFR-DBP-002 PATCH
SEW DOWN W/ S.N. EDGE
STITCH ON ALL SIDES W/
TONAL THREAD

MITERED CUFF
CORNERS



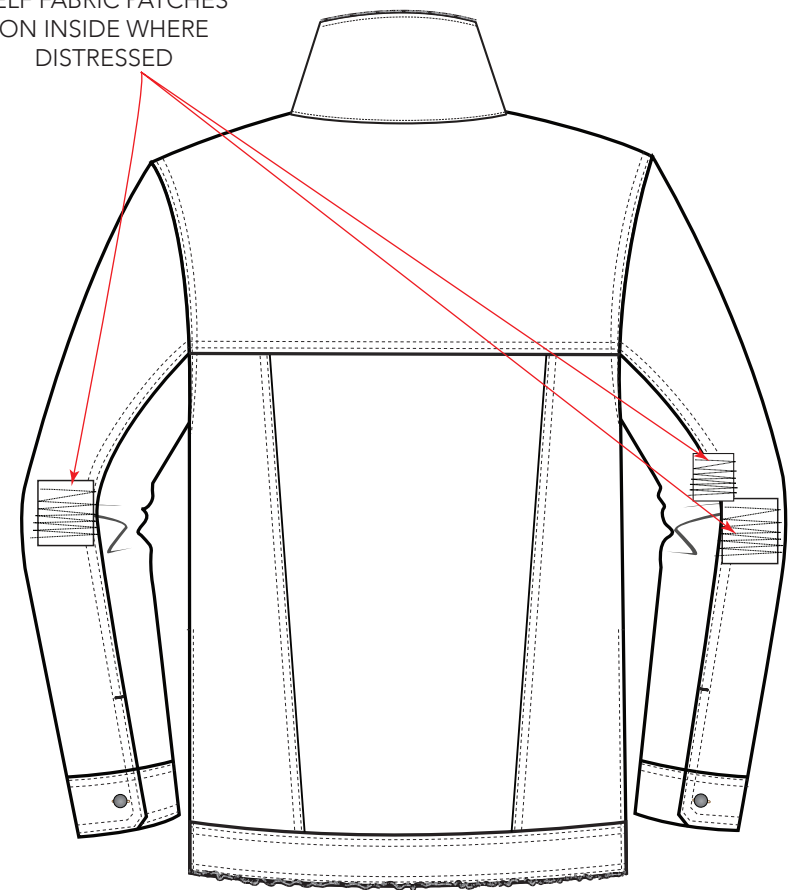
INTERIOR DETAILS

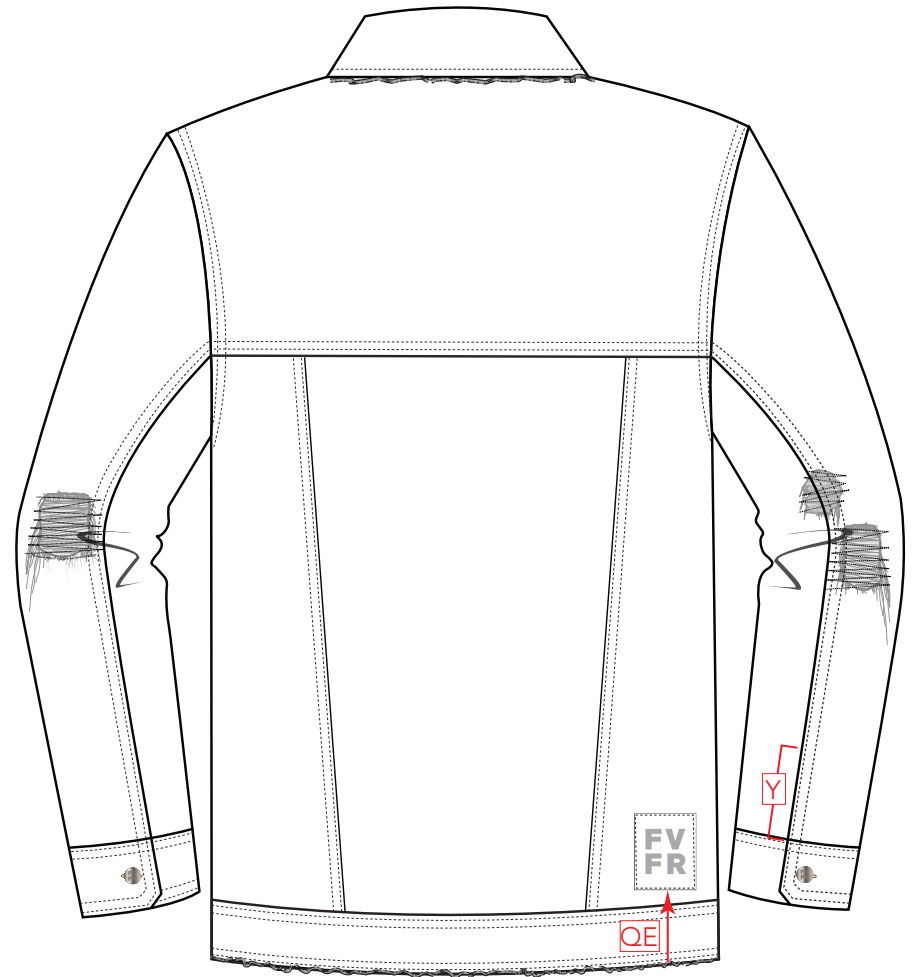
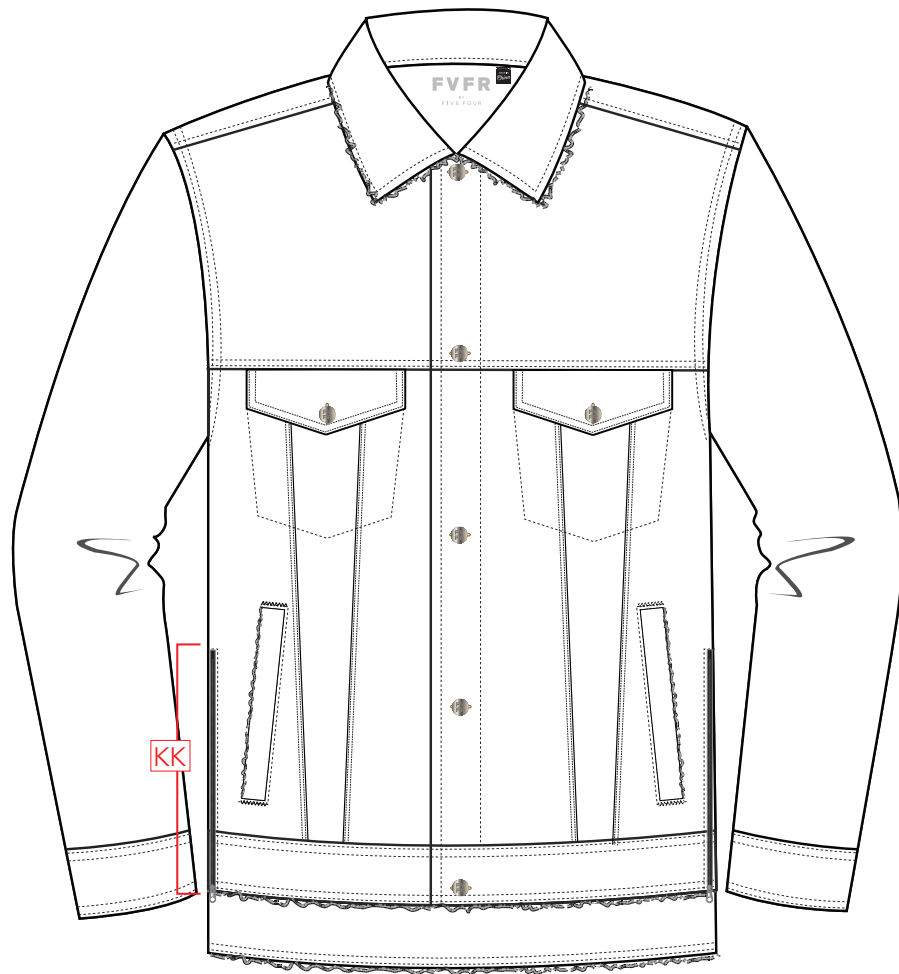
TWILL CHEST
& BOTTOM POCKET
BAGS



WATERBASED PRINTED
POCKET BAGS
SEE SEPARATE ART FILE

SELF FABRIC PATCHES
ON INSIDE WHERE
DISTRESSED





COLOR & WASH REFERENCE
SAMPLE SENT (KSUBI SAMPLE)



FVFR - LABELS & HANGTAG PLACEMENT

