

**Article Summary**

Version 1

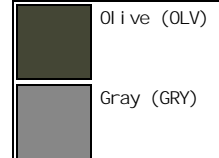


<b>Article Code</b>	01D-06-400	<b>Description</b>	FIELD JACKET W/ MULTIPLE POCKETS	<b>Product Group</b>	Outerwear
<b>Article Name</b>	HOLLINS			<b>Product Sub-Category</b>	Jackets
<b>Created On</b>	08/30/17 8:37:49 AM	<b>Material</b>	CRINKLED NYLON	<b>Season</b>	2018 Winter
<b>Last Modified</b>	09/27/17 9:00:12 AM	<b>Description</b>		<b>Life Cycle Stage</b>	



<b>Collaboration</b>		<b>Fit</b>		<b>Type</b>	
<b>Delivery Month</b>	Feb	<b>Wash Type</b>	None	<b>Supplier Ref.</b>	
<b>Collection</b>	Fi ve Four Cl ub				

**COLORS**



**COLORWAY : GRAY**  
01D-06-400-GRY

**COLORWAY : OLIVE**  
01D-06-400-OLV



**SIZES**



S, M, L, XL, 2X, 3X

**NOTES**

9/27/17 JK: 'OATMEAL' REPLACED WITH 'GRAY' SPONGE CAMO

**Bill of Material**

Version 1

	<b>Article Code</b>	01D-06-400	<b>Description</b>	FIELD JACKET W/ MULTIPLE POCKETS			<b>Product Group</b>		Outerwear		
	<b>Article Name</b>	HOLLINS					<b>Product Sub-Category</b>		Jackets		
	<b>Created On</b>	08/30/17 8:37:49 AM	<b>Material Description</b>	CRINKLED NYLON			<b>Season</b>		2018 Winter		
	<b>Last Modified</b>	09/27/17 9:00:12 AM					<b>Life Cycle Stage</b>				

Part	Material	Placement	Size	Qty.	UOM.	Price	Supplier	Supplier Ref.	Comments
------	----------	-----------	------	------	------	-------	----------	---------------	----------

**Fabric**

	CRINKLED NYLON (HT-1862-1) Weight.:MATCH ORIGINAL SAMPLE Content:100% NYLON	ALL PIECES	None	0	Yards	0.00USD		HAIYUAN	
	POLYESTER LINING (PO-001) 100% POLYESTER PLAIN-WEAVE LINING Weight.:STANDARD LINING WEIGHT Content:100% POLYESTER	INSIDE FULL LINING	None	0	Yards	0.00USD		VENDOR TO SOURCE	

**Thread**

	TX60-PO (THREAD001) TX60 POLY THREAD		None	0	Yards	0.00USD			
--	--	--	------	---	-------	---------	--	--	--

**Trims**



	1-WAY OPEN-END METAL ZIPPER (1W0E2P-METAL) 1-WAY OPEN-END METAL ZIPPER	CF OPENING	#8 (#8)	1.00	Units	0.00USD		VENDOR TO SOURCE	
	CUSTOM RECTANGLE METAL ZIPPER PULLER (FF-ZP-001)	CF ZIPPER	#8 (#8)	1.00	Units	0.00USD		VENDOR TO SOURCE	
	1-WAY CLOSED-END METAL ZIPPER (1WCE2P-M)	SLEEVES, INSIDE FRONT PKT	#3 (#3)	3.00	Units	0.00USD		VENDOR TO SOURCE	
	CUSTOM RECTANGLE METAL ZIPPER PULLER (FF-ZP-001)	SLEEVE ZIPPERS, INSIDE FRT PKT ZIPPER	#3 (#3)	3.00	Units	0.00USD		VENDOR TO SOURCE	
	METAL SPRING SNAP BUTTON W/ ENGRAVED LOGO (FF-PS-001)	CF, COLLAR POINT, CF HEM TAB, ALL EXTERIOR PKTS	24 LIGNE (24L)	22.00	Pair	0.00USD		VENDOR TO SOURCE	
	PLASTIC 4-HOLE RIMMED CHINO BUTTONS (FF-CB-001)	EPAULETS, TOP OF HOOD, FRONT BODY SIDE TABS, INSIDE CF HEM (FOR ELASTIC BAND), 1 SPARE BUTTON	24 LIGNE (24L)	8.00	Units	0.00USD		VENDOR TO SOURCE	
	METAL EYELET (EYE001)	BOTTOM OF BELLOW PKTS (2 EACH), HOOD (FOR CORD)	16 LIGNE (16L)	18.00	Units	0.00USD		VENDOR TO SOURCE	
	3/8" FLAT POLYESTER TUBULAR DRAW CORD (DC-TUB5)	HOOD	None	0	Inches	0.00USD		VENDOR TO SOURCE	
	METAL AGLET (MA)	HOOD CORD TIPS	None	2.00	Units	0.00USD		VENDOR TO SOURCE	
	METAL RECTANGLE RING (RING-REC)	FRONT CHEST PKT STRAPS	3/4" (3/4)	2.00	Units	0.00USD		VENDOR TO SOURCE	

**Labels**

	PRINTED COTTON TWILL MAIN LABEL (FF-ML-001)		None	1.00	Units	0.00USD	Changfeng		
	PRINTED COTTON TWILL SIZE LABEL (FF-SL-001)		None	1.00	Units	0.00USD	Changfeng		

**Bill of Material**



Version 1

	<b>Article Code</b>	01D-06-400	<b>Description</b>	FIELD JACKET W/ MULTIPLE POCKETS			<b>Product Group</b>		Outerwear		
	<b>Article Name</b>	HOLLINS					<b>Product Sub-Category</b>		Jackets		
	<b>Created On</b>	08/30/17 8:37:49 AM	<b>Material Description</b>	CRINKLED NYLON			<b>Season</b>		2018 Winter		
	<b>Last Modified</b>	09/27/17 9:00:12 AM					<b>Life Cycle Stage</b>				

Part	Material	Placement	Size	Qty.	UOM.	Price	Supplier	Supplier Ref.	Comments
	COO SCRIPT (10-TR-591)		None	1.00	Units	0.00USD			
	2017 CARDSTOCK HANGTAG (FF-HT-001)		None	1.00	Units	0.00USD	Changfeng		
	UPC STICKER - TOPS / SINGLE FIT BOTTOMS (10-TR-583)		None	1.00	Units	0.00USD		VENDOR TO SOURCE	
	CARE LABEL - TOPS / SINGLE FIT BOTTOMS (10-TR-584)		None	1.00	Units	0.00USD		VENDOR TO SOURCE	

**Color Dependencies**

Version 1

	<b>Article Code</b>	01D-06-400	<b>Description</b>	FIELD JACKET W/ MULTIPLE POCKETS			<b>Product Group</b>	Outerwear	
	<b>Article Name</b>	HOLLINS					<b>Product Sub-Category</b>	Jackets	
	<b>Created On</b>	08/30/17 8:37:49 AM	<b>Material</b>	CRINKLED NYLON			<b>Season</b>	2018 Winter	
	<b>Last Modified</b>	09/27/17 9:00:12 AM	<b>Description</b>				<b>Life Cycle Stage</b>		

<b>Part</b>	<b>Material</b>	<b>Placement</b>	OLV Olive	GRY Gray					
-------------	-----------------	------------------	--------------	-------------	--	--	--	--	--

**Fabric**

	CRINKLED NYLON (HT-1862-1)	ALL PIECES	SPONGE CAMO PRINT- OLIVE SPONGECAMO-OLV	SPONGE CAMO PRINT- GRAY SPONGECAMO-GRY					
	POLYESTER LINING (PO-001)	INSIDE FULL LINING	GOLD FLAME 16-1449TCX	GOLD FLAME 16-1449TCX					

**Thread**

	TX60-PO (THREAD001)		TONAL TON	TONAL TON					
--	------------------------	--	--------------	--------------	--	--	--	--	--

**Trims**

	1-WAY OPEN-END METAL ZIPPER (1W0E2P-METAL)	CF OPENING	DULL NICKEL DULLNICK	DULL NICKEL DULLNICK					
	CUSTOM RECTANGLE METAL ZIPPER PULLER (FF-ZP-001)	CF ZIPPER	DULL NICKEL DULLNICK	DULL NICKEL DULLNICK					
	1-WAY CLOSED-END METAL ZIPPER (1WCE2P-M)	SLEEVES, INSIDE FRONT PKT	DULL NICKEL DULLNICK	DULL NICKEL DULLNICK					
	CUSTOM RECTANGLE METAL ZIPPER PULLER (FF-ZP-001)	SLEEVE ZIPPERS, INSIDE FRT PKT ZIPPER	DULL NICKEL DULLNICK	DULL NICKEL DULLNICK					
	METAL SPRING SNAP BUTTON W/ ENGRAVED LOGO (FF-PS-001)	CF, COLLAR POINT, CF HEM TAB, ALL EXTERIOR PKTS	DULL NICKEL DLLNCKL	DULL NICKEL DLLNCKL					
	PLASTIC 4-HOLE RIMMED CHINO BUTTONS (FF-CB-001)	EPAULETS, TOP OF HOOD, FRONT BODY SIDE TABS, INSIDE CF HEM (FOR ELASTIC BAND), 1 SPARE BUTTON	DTM SELF DTMS	DTM SELF DTMS					

**Color Dependencies**

Version 1



<b>Article Code</b>	01D-06-400	<b>Description</b>	FIELD JACKET W/ MULTIPLE POCKETS				<b>Product Group</b>	Outerwear
	<b>Article Name</b>		HOLLINS	<b>Material</b>	CRINKLED NYLON		<b>Product Sub-Category</b>	Jackets
	<b>Created On</b>		08/30/17 8:37:49 AM				<b>Season</b>	2018 Winter
	<b>Last Modified</b>		09/27/17 9:00:12 AM				<b>Life Cycle Stage</b>	



Part	Material	Placement	OLV Olive	GRY Gray					
	METAL EYELET (EYE001)	BOTTOM OF BELLOWS PKTS (2 EACH), HOOD (FOR CORD)	DULL NICKEL DULLNICK	DULL NICKEL DULLNICK					
	3/8" FLAT POLYESTER TUBULAR DRAW CORD (DC-TUB5)	HOOD	DARK OLIVE 19-0516TCX	BRILLIANT WHITE 11-4001TCX					
	METAL AGLET (MA)	HOOD CORD TIPS	GOLD FLAME 16-1449TCX	DULL NICKEL DULLNICK					
	METAL RECTANGLE RING (RING-REC)	FRONT CHEST PKT STRAPS	DULL NICKEL DLLNCKL	DULL NICKEL DLLNCKL					

**Labels**


	PRINTED COTTON TWILL MAIN LABEL (FF-ML-001)		Off White OFW	Off White OFW					
	PRINTED COTTON TWILL SIZE LABEL (FF-SL-001)		Off White OFW	Off White OFW					
	COO SCRIPT (10-TR-591)		Black BLK	Black BLK					
	2017 CARDSTOCK HANGTAG (FF-HT-001)		Off White OFW	Off White OFW					
	UPC STICKER - TOPS / SINGLE FIT BOTTOMS (10-TR-583)		White WHT	White WHT					
	CARE LABEL - TOPS / SINGLE FIT BOTTOMS (10-TR-584)		White WHT	White WHT					

**Material Image Sheet**

Version 1

	<b>Article Code</b> 01D-06-400 <b>Article Name</b> HOLLINS <b>Created On</b> 08/30/17 8:37:49 AM <b>Last Modified</b> 09/27/17 9:00:12 AM	<b>Description</b> FIELD JACKET W/ MULTIPLE POCKETS  <b>Material Description</b> CRINKLED NYLON	<b>Product Group</b> Outerwear <b>Product Sub-Category</b> Jackets <b>Season</b> 2018 Winter <b>Life Cycle Stage</b>	
--	--	---	---	---

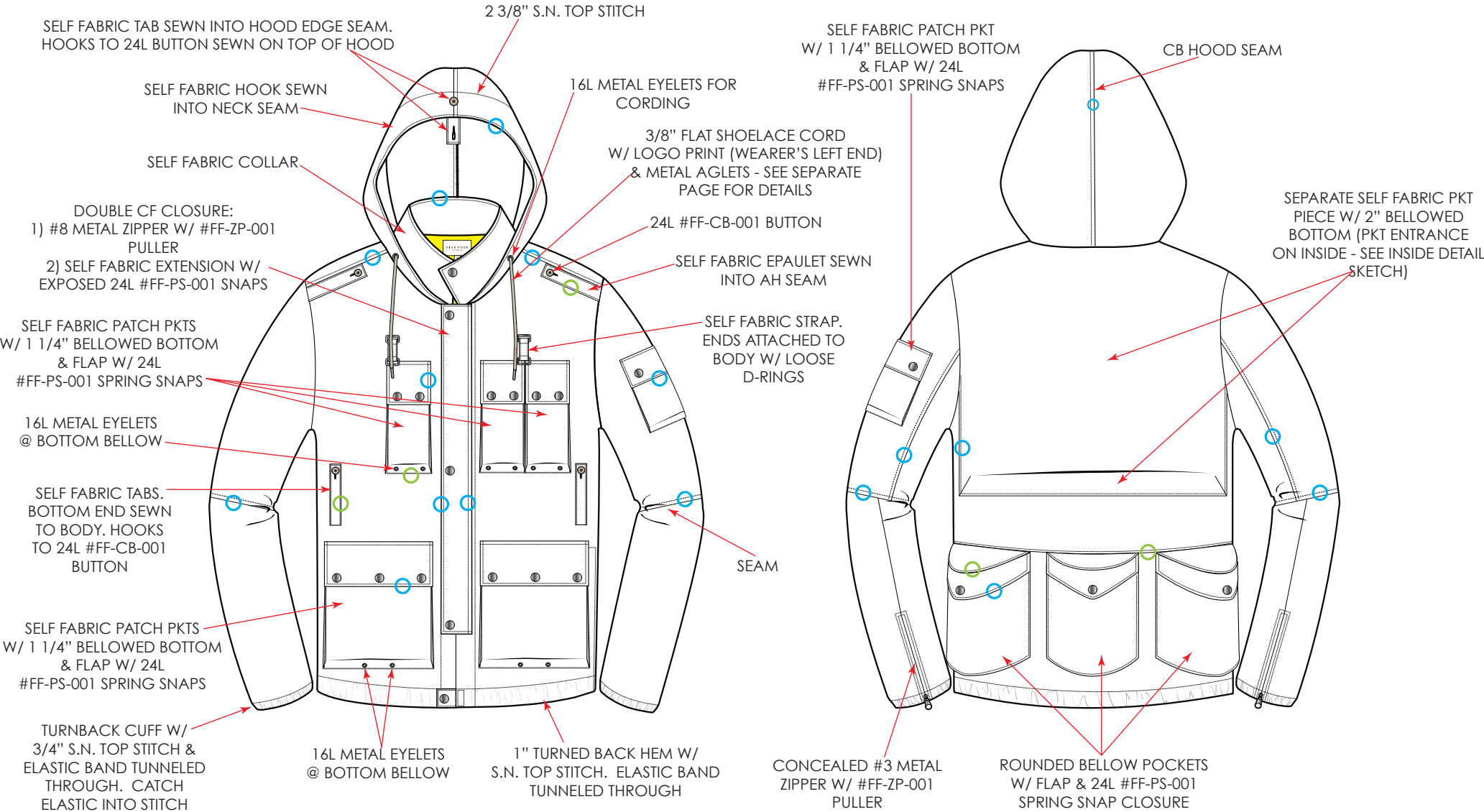
 <p>HT-1862-1 CRINKLED NYLON</p>	 <p>FF-ZP-001 CUSTOM RECTANGLE METAL ZIPPER PULLER</p>	 <p>FF-PS-001 METAL SPRING SNAP BUTTON W/ ENGRAVED LOGO</p>	 <p>FF-CB-001 PLASTIC 4-HOLE RIMMED CHINO BUTTONS</p>	 <p>MA METAL AGLET</p>	 <p>RING-REC METAL RECTANGLE RING</p>
 <p>FF-ML-001 PRINTED COTTON TWILL MAIN LABEL</p>	 <p>FF-SL-001 PRINTED COTTON TWILL SIZE LABEL</p>	 <p>10-TR-591 COO SCRIPT</p>	 <p>FF-HT-001 2017 CARDSTOCK HANGTAG</p>	 <p>10-TR-583 UPC STICKER - TOPS / SINGLE FIT BOTTOMS</p>	 <p>10-TR-584 CARE LABEL - TOPS / SINGLE FIT BOTTOMS</p>

Tech Pack - Detail Callouts						Version 1
	Article Code	01D-06-400	Description	FIELD JACKET W/ MULTIPLE POCKETS	Product Group	Outerwear
	Article Name	HOLLINS			Product Sub-Category	Jackets
	Created On	08/30/17 8:37:49 AM	Material	CRINKLED NYLON	Season	2018 Winter
	Last Modified	09/27/17 9:00:12 AM	Description		Life Cycle Stage	





# EXTERIOR SKETCH

- SELF FABRIC
- LINING 1
- 1/4" S.N. TOP STITCH
- S.N. EDGE STITCH



**Tech Pack - Detail Callouts**

Version 1

	Article Code	01D-06-400	Description	FIELD JACKET W/ MULTIPLE POCKETS	Product Group	Outerwear	
	Article Name	HOLLINS		Material	CRINKLED NYLON	Product Sub-Category	
	Created On	08/30/17 8:37:49 AM	Description		Season	2018 Winter	
	Last Modified	09/27/17 9:00:12 AM		Life Cycle Stage			

**INTERIOR SKETCH**

\*HOOD IS TUCKED INSIDE IN SKETCH\*

□ SELF FABRIC

■ LINING 1

○ 1/4" S.N. TOP STITCH

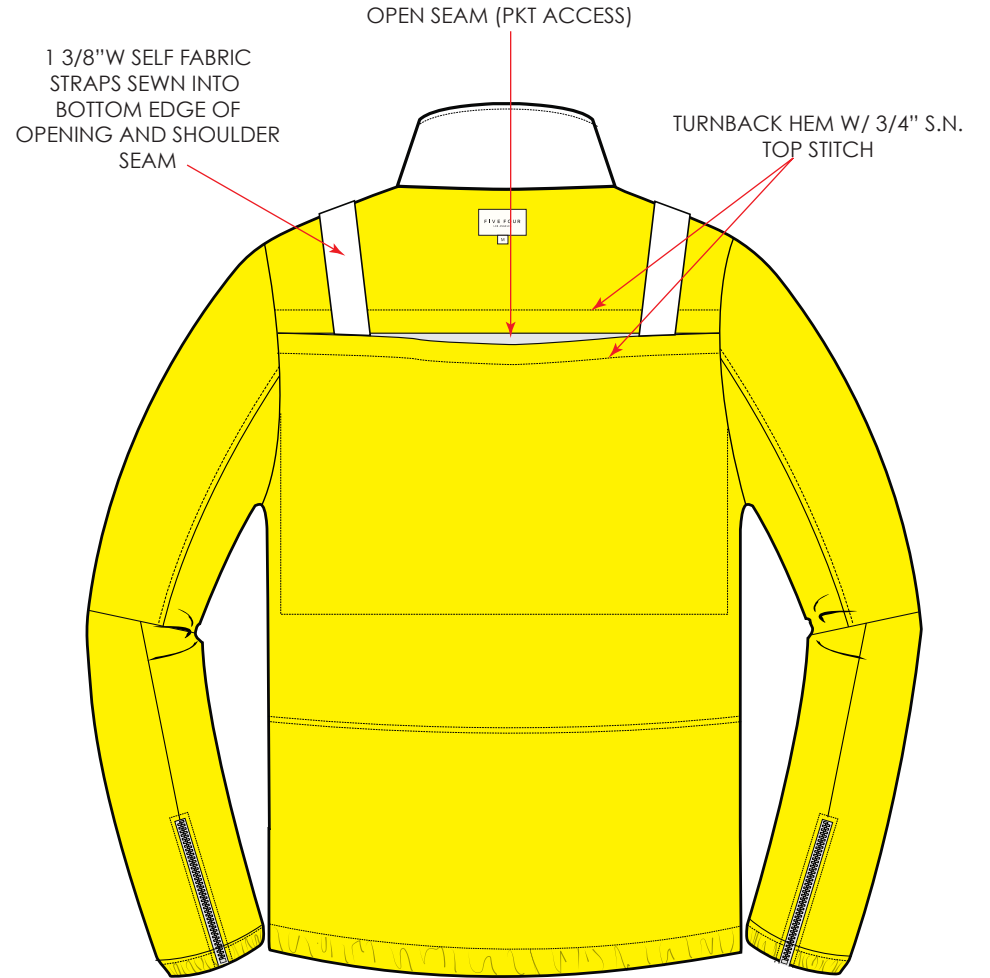
○ S.N. EDGE STITCH

\*ALL INSIDE SEAM ALLOWANCES : 4-THREAD OVERLOCK



#3 METAL ZIPPER PKT  
W/ #FF-ZP-001 PULLER.  
SET BEHIND FACE SIDE  
PKT

INSIDE ELASTIC BAND  
HOOKS TO 24L #FF-CB-001  
BUTTON ATTACHED TO BODY



OPEN SEAM (PKT ACCESS)

1 3/8"W SELF FABRIC  
STRAPS SEWN INTO  
BOTTOM EDGE OF  
OPENING AND SHOULDER  
SEAM

TURNBACK HEM W/ 3/4" S.N.  
TOP STITCH



Tech Pack - Detail Callouts						Version 1
	Article Code	01D-06-400	Description	FIELD JACKET W/ MULTIPLE POCKETS	Product Group	Outerwear
	Article Name	HOLLINS			Product Sub-Category	Jackets
	Created On	08/30/17 8:37:49 AM	Material	CRINKLED NYLON	Season	2018 Winter
	Last Modified	09/27/17 9:00:12 AM	Description		Life Cycle Stage	



## DRAW CORD DETAILS :

\*ACTUAL SIZE\*

### GRAY COLORWAY: 'BRILLIANT WHITE' CORD

**SYNTHETIC FLAT  
DRAWCORD PANTONE**



**HEAT TRANSFER  
PRINT PANTONE**



### OLIVE COLORWAY: 'DARK OLIVE' CORD

**SYNTHETIC FLAT  
DRAWCORD PANTONE**




**HEAT TRANSFER  
PRINT PANTONE**



**AGLET PANTONE:**

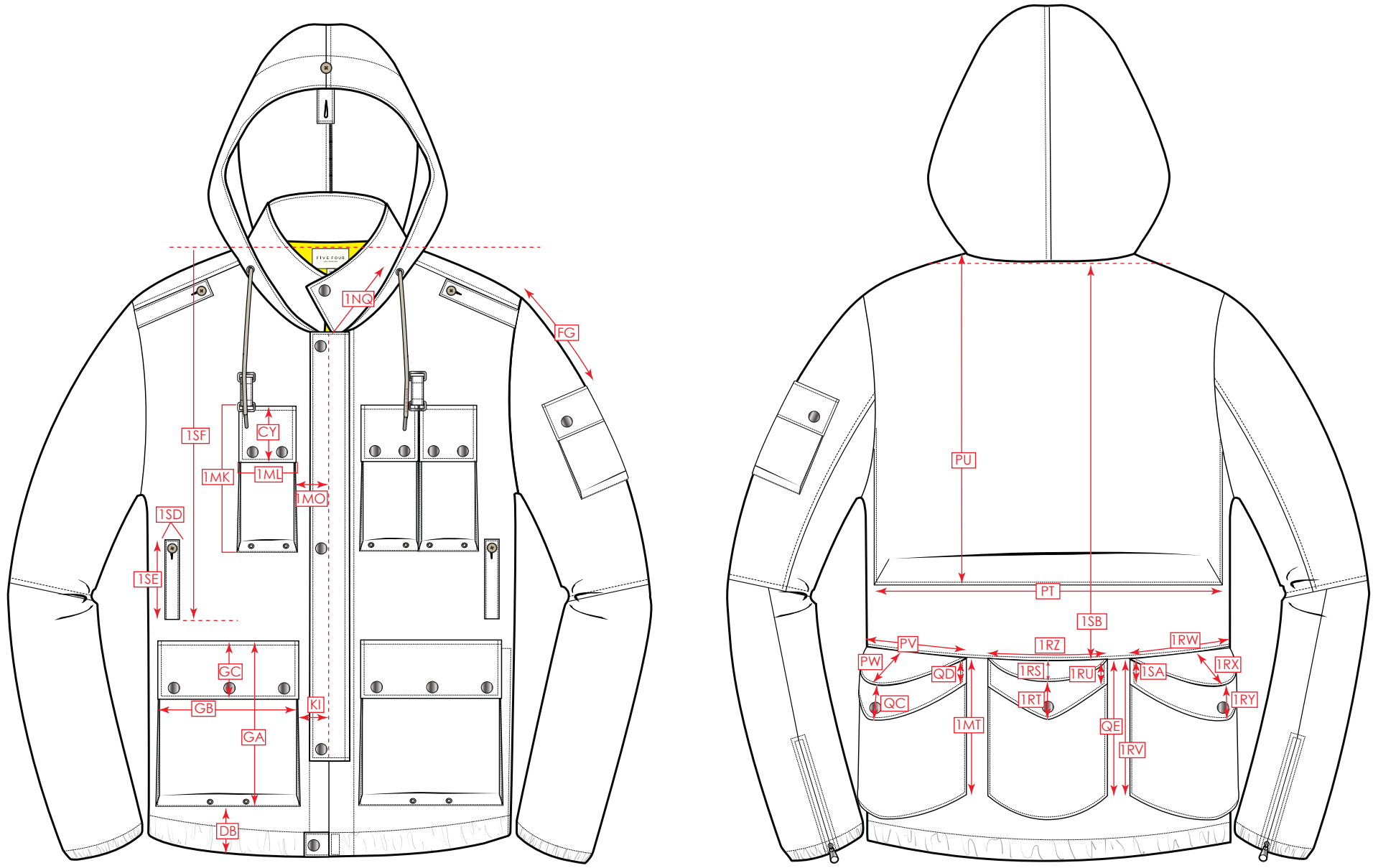


\*PRINTED ON 1 SIDE ONLY\*

Tech Pack - Detail Callouts				Version 1		
	Article Code	01D-06-400	Description	FIELD JACKET W/ MULTIPLE POCKETS	Product Group	Outerwear
	Article Name	HOLLINS		Product Sub-Category	Jackets	
	Created On	08/30/17 8:37:49 AM	Material Description	CRINKLED NYLON	Season	2018 Winter
	Last Modified	09/27/17 9:00:12 AM		Life Cycle Stage		





## EXTERIOR - DETAIL POM GUIDE

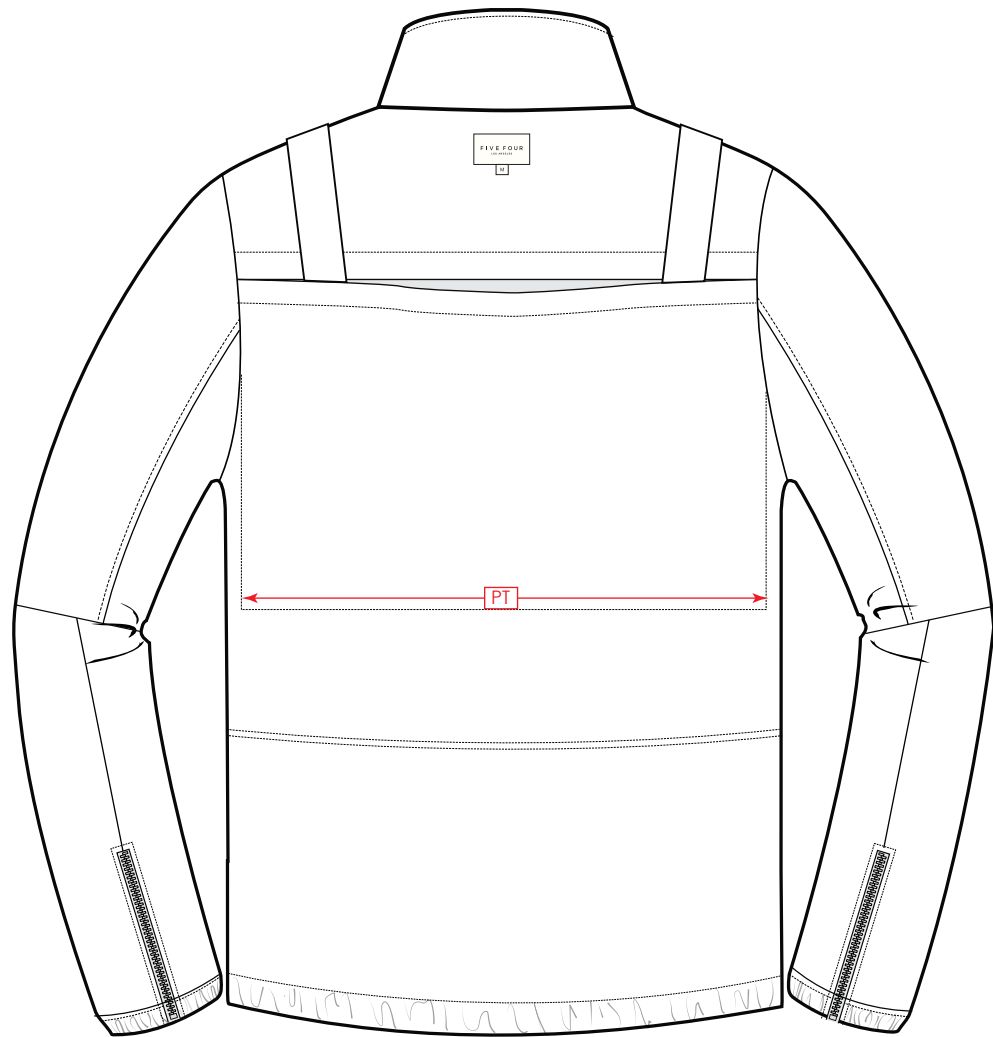
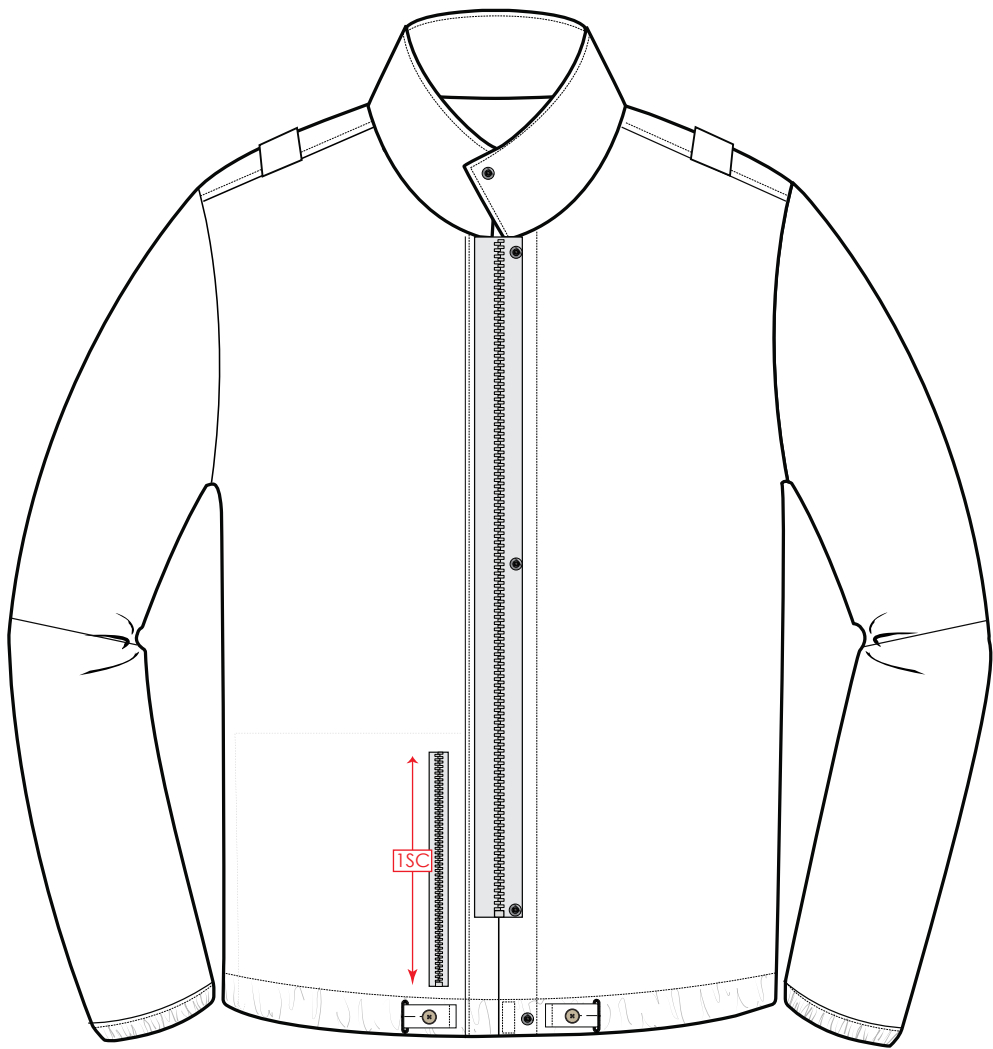


**Tech Pack - Detail Callouts**

Version 1



	<b>Article Code</b>	01D-06-400	<b>Description</b>	FIELD JACKET W/ MULTIPLE POCKETS	<b>Product Group</b>	Outerwear	
	<b>Article Name</b>	HOLLINS			<b>Product Sub-Category</b>	Jackets	
	<b>Created On</b>	08/30/17 8:37:49 AM	<b>Material</b>	CRINKLED NYLON	<b>Season</b>	2018 Winter	
	<b>Last Modified</b>	09/27/17 9:00:12 AM	<b>Description</b>		<b>Life Cycle Stage</b>		

**INTERIOR - DETAIL POM GUIDE**



**Tech Pack - Detail Callouts**

Version 1



	Article Code	01D-06-400	Description	FIELD JACKET W/ MULTIPLE POCKETS	Product Group	Outerwear	
	Article Name	HOLLINS			Product Sub-Category	Jackets	
	Created On	08/30/17 8:37:49 AM	Material	CRINKLED NYLON	Season	2018 Winter	
	Last Modified	09/27/17 9:00:12 AM	Description		Life Cycle Stage		

**ORIGINAL REFERENCE SAMPLE**



**Tech Pack - Detail Callouts**

Version 1



	Article Code	01D-06-400	Description	FIELD JACKET W/ MULTIPLE POCKETS	Product Group	Outerwear	
	Article Name	HOLLINS			Product Sub-Category	Jackets	
	Created On	08/30/17 8:37:49 AM	Material	CRINKLED NYLON	Season	2018 Winter	
	Last Modified	09/27/17 9:00:12 AM	Description		Life Cycle Stage		

**PROTO SAMPLE (APPROVED)**



**Tech Pack - Detail Callouts**

Version 1

	Article Code	01D-06-400	Description	FIELD JACKET W/ MULTIPLE POCKETS	Product Group	Outerwear	
	Article Name	HOLLINS			Product Sub-Category	Jackets	
	Created On	08/30/17 8:37:49 AM	Material	CRINKLED NYLON	Season	2018 Winter	
	Last Modified	09/27/17 9:00:12 AM	Description		Life Cycle Stage		

**PROTO SAMPLE (APPROVED) - CONT.**



CHEST PKTS - BELLOWED BOTTOM EYELETS



BACK PKTS - BELLOWED BOTTOM EYELETS



FRONT SIDE BODY TABS



SLEEVE POCKET



HOOD OPENING CF TAB



SHOULDER EPAULET





BACK SLV OPENING



FRONT BOTTOM HEM

**Tech Pack - Detail Callouts**

Version 1

	Article Code	01D-06-400	Description	FIELD JACKET W/ MULTIPLE POCKETS	Product Group	Outerwear	
	Article Name	HOLLINS			Product Sub-Category	Jackets	
	Created On	08/30/17 8:37:49 AM	Material	CRINKLED NYLON	Season	2018 Winter	
	Last Modified	09/27/17 9:00:12 AM	Description		Life Cycle Stage		

**PROTO SAMPLE (APPROVED) - INSIDE VIEW**



INSIDE FRONT



INSIDE BACK



INSIDE HEM - ELASTIC BAND FINISH



INSIDE BACK POCKET

Tech Pack - Detail Callouts

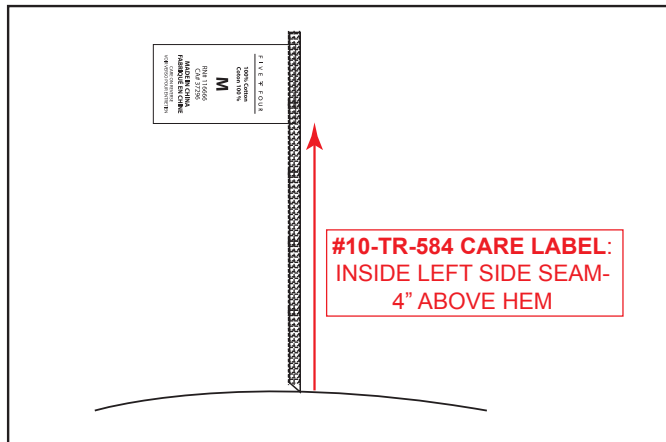
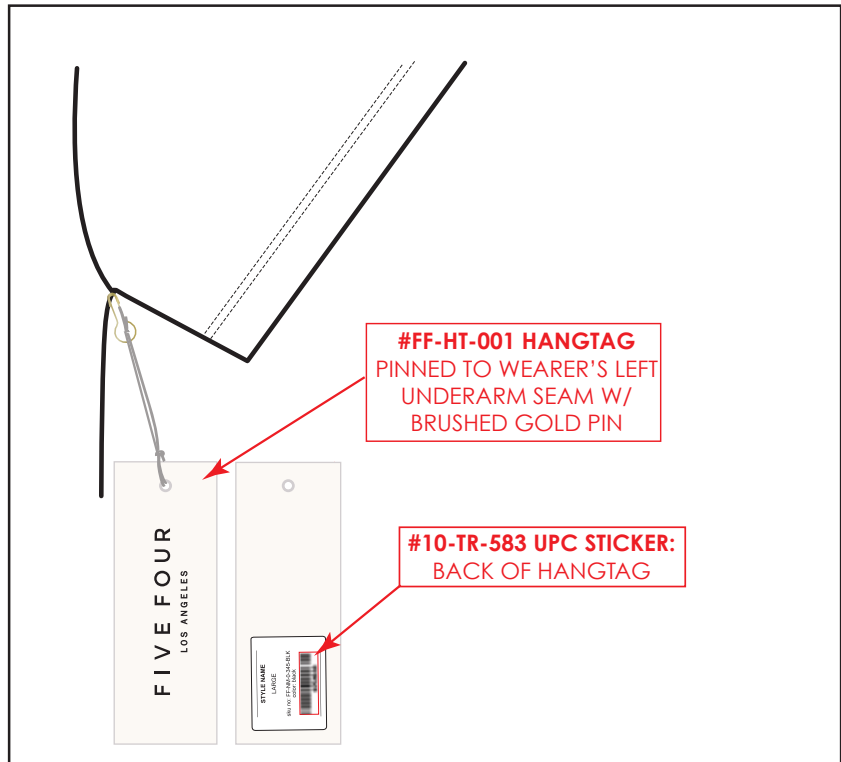
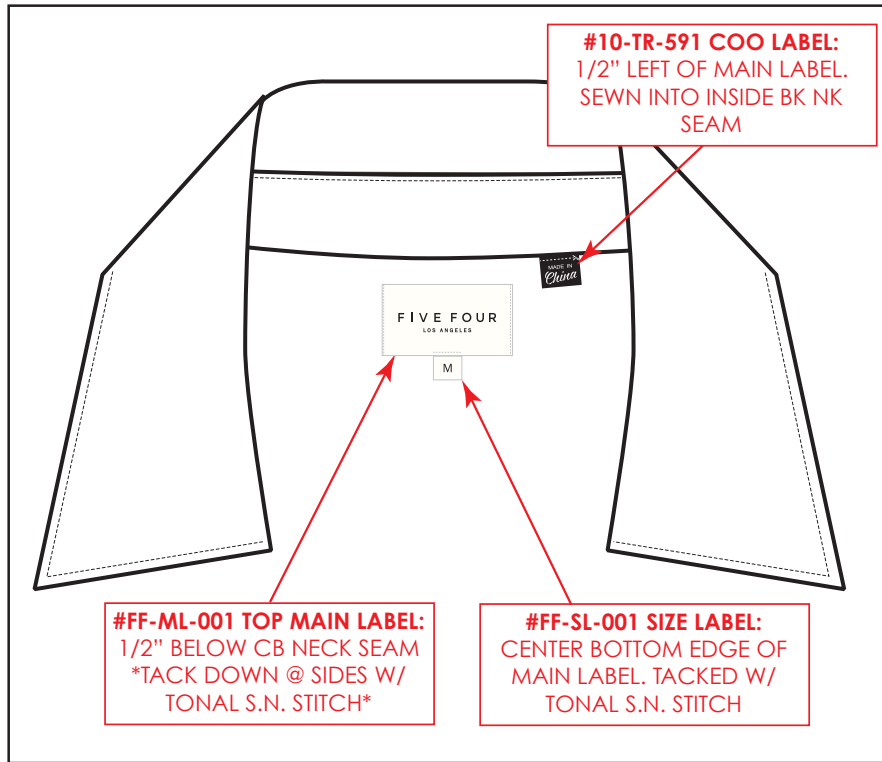
Version 1



Article Code	01D-06-400	Description	FIELD JACKET W/ MULTIPLE POCKETS	Product Group	Outerwear
Article Name	HOLLINS	Material	CRINKLED NYLON	Product Sub-Category	Jackets
Created On	08/30/17 8:37:49 AM	Description		Season	2018 Winter
Last Modified	09/27/17 9:00:12 AM			Life Cycle Stage	



LABELS & TAG PLACEMENT SKETCH





**SPEC SHEET**

Version 1



<b>Article Code</b>	01D-06-400	<b>Description</b>	FIELD JACKET W/ MULTIPLE POCKETS	<b>Product Group</b>	Outerwear
<b>Article Name</b>	HOLLINS	<b>Material</b>	CRINKLED NYLON	<b>Product Sub-Category</b>	Jackets
<b>Created On</b>	08/30/17 8:37:49 AM	<b>Description</b>		<b>Season</b>	2018 Winter
<b>Last Modified</b>	09/27/17 9:00:12 AM			<b>Life Cycle Stage</b>	

POM	Description	+ Tol	- Tol	Grade	S	M	L	XL	2X	3X					
1JA	FRONT LENGTH FROM HPS	3/8	3/8	3/4	30 3/4	31 1/2	32 1/4	33	33 3/4	34 1/2					
1JB	BACK LENGTH FROM HPS	3/8	3/8	3/4	30 3/4	31 1/2	32 1/4	33	33 3/4	34 1/2					
1JC	CBK LENGTH	3/8	3/8	1/2	30 1/2	31	31 1/2	32	32 1/2	33					
1LQ	CENTER FRONT PLACKET LENGTH	1/4	1/4	1/2	26 3/4	27 1/4	27 3/4	28 1/4	28 3/4	29 1/4					
1PD	C FRONT PLACKET WIDTH	1/8	1/8	0	-0	0	+0	+0	+0	+0					
1KK	SHOULDER SLOPE	1/8	1/8	1/8	1 7/8	2	2 1/8	2 1/4	2 3/8	2 1/2					
1KL	SHOULDER SEAM FORWARD	1/8	1/8	0	1 1/2	1 1/2	1 1/2	1 1/2	1 1/2	1 1/2					
1JF	ACROSS SHOULDERS	1/4	1/4	NA	17 3/4	18 1/2	19 1/4	20	21	22					
1JG	ACROSS FRONT 6" FROM HPS	1/4	1/4	NA	15 3/4	16 1/2	17 1/4	18	19	20					
1JH	ACROSS BACK 6" FROM HPS	1/4	1/4	NA	17 3/4	18 1/2	19 1/4	20	21	22					
1JR	CHEST CIRCUMFERENCE 1" BELOW ARMHOLE	1/2	1/2	NA	42 1/2	45 1/2	48 1/2	51 1/2	55 1/2	59 1/2					
1JS	WAIST CIRCUMFERENCE 6" BELOW ARMHOLE	1/2	1/2	NA	41 1/2	44 1/2	47 1/2	50 1/2	54 1/2	58 1/2					
1JT	BOTTOM OPENING STRAIGHT ACROSS	1/2	1/2	NA	41 1/2	44 1/2	47 1/2	50 1/2	54 1/2	58 1/2					
1OZ	BOTTOM HEM HEIGHT	1/8	1/8	NA	0	1 1/2	0	0	0	0					
1KD	ARMHOLE DEPTH STRAIGHT	1/4	1/4	3/8	9 5/8	10	10 3/8	10 3/4	11 1/8	11 1/2					
1KE	FRONT ARMHOLE ALONG SEAM	1/4	1/4	NA	9 1/8	9 3/4	10 3/8	11	11 3/4	12 1/2					
1KF	BACK ARMHOLE ALONG SEAM	1/4	1/4	NA	12 1/8	12 3/4	13 3/8	14	14 3/4	15 1/2					
1LL	SLEEVE CAP HEIGHT	1/8	1/8	1/4	6 3/4	7	7 1/4	7 1/2	7 3/4	8					
1LM	SLEEVE CAP WIDTH 3" FROM SHOULDER SEAM	1/8	1/8	1/4	9 3/4	10	10 1/4	10 1/2	10 3/4	11					
! 1KU	LONG SLEEVE LENGTH	1/4	1/4	1/2	26	26 1/2	27	27 1/2	28	28 1/2					
1LA	LONG SLEEVE INSEAM LENGTH	1/4	1/4	1/4	19 1/4	19 1/2	19 3/4	20	20 1/4	20 1/2					
1KA	MUSCLE CIRCUMFERENCE 1" BELOW ARMHOLE	1/4	1/4	NA	16	17	18	19	20 1/4	21 1/2					
1LG	LONG SLEEVE OPENING ALONG HEM (RELAXED)	1/4	1/4	1/4	-1/4	0	+1/4	+1/4	+1/4	+1/4					
1PA	SLEEVE HEM HEIGHT	1/8	1/8	0	-0	0	+0	+0	+0	+0					
1KM	NECK WIDTH SEAM TO SEAM	1/8	1/8	1/4	6 1/4	6 1/2	6 3/4	7	7 1/4	7 1/2					
1KO	FRONT NECK DROP SEAM TO SEAM	1/8	1/8	3/16	4 1/16	4 1/4	4 7/16	4 5/8	4 13/16	5					
1KP	BACK NECK DROP SEAM TO SEAM	1/8	1/8	3/16	5/16	1/2	11/16	7/8	1 1/16	1 1/4					
1MC	COLLAR TOP EDGE	1/4	1/4	1	17 1/2	18 1/2	19 1/2	20 1/2	21 1/2	22 1/2					
1ME	COLLAR HEIGHT AT CENTER BACK	1/8	1/8	0	2 1/2	2 1/2	2 1/2	2 1/2	2 1/2	2 1/2					
1MD	COLLAR POINT LENGTH	1/8	1/8	0	2 1/4	2 1/4	2 1/4	2 1/4	2 1/4	2 1/4					
PS	SLEEVE ZIPPER LENGTH	1/4	1/4	NA	0	5	0	0	0	0					
1NK	HOOD HEIGHT AT OPENING EDGE (FROM CF NECK SEAM)	1/4	1/4	NA	0	17	0	0	0	0					
1NL	HOOD DEPTH 3" BELOW TOP EDGE	1/4	1/4	NA	0	11	0	0	0	0					
1NM	HOOD LENGTH ALONG CB TOP SEAM	1/4	1/4	NA	0	20 3/4	0	0	0	0					
1NP	HOOD HEM WIDTH	1/8	1/8	NA	0	2	0	0	0	0					

**SPEC SHEET**

Version 1



<b>Article Code</b>	01D-06-400	<b>Description</b>	FIELD JACKET W/ MULTIPLE POCKETS								<b>Product Group</b>	Outerwear
<b>Article Name</b>	HOLLINS		<b>Material</b>	CRINKLED NYLON								<b>Product Sub-Category</b>
<b>Created On</b>	08/30/17 8:37:49 AM	<b>Description</b>									<b>Season</b>	2018 Winter
<b>Last Modified</b>	09/27/17 9:00:12 AM		<b>Life Cycle Stage</b>									

POM	Description	+ Tol	- Tol	Grade	S	M	L	XL	2X	3X					
1NR	HOOD DRAWSTRING TOTAL LENGTH TIP TO TIP	1/2	1/2	NA	0	46	0	0	0	0					
1MA	EPAULET LENGTH	1/8	1/8	NA	0	3 1/2	0	0	0	0					
1MB	EPAULET WIDTH	1/8	1/8	NA	0	1 1/2	0	0	0	0					
1MK	UPPER FRONT POCKET HEIGHT INCL FLAP	1/8	1/8	NA	0	5 1/2	0	0	0	0					
1ML	UPPER FRONT POCKET WIDTH - WEARER'S LEFT	1/8	1/8	NA	0	2 1/4	0	0	0	0					
CY	UPPER FRONT POCKET FLAP HEIGHT TOTAL	1/8	1/8	NA	0	2 1/4	0	0	0	0					
1MN	UPPER FRONT POCKET PLACEMENT FROM HPS	1/8	1/8	NA	0	8	0	0	0	0					
1MO	UPPER FRONT POCKET PLACEMENT FROM C FRONT	1/8	1/8	NA	0	1 1/2	0	0	0	0					
GA	BOTTOM POCKET HEIGHT INCL. FLAP	1/8	1/8	NA	0	7	0	0	0	0					
GB	BOTTOM POCKET WIDTH	1/8	1/8	NA	0	6	0	0	0	0					
GC	BOTTOM POCKET FLAP HEIGHT @ CENTER	1/8	1/8	NA	0	3	0	0	0	0					
KI	BOTTOM POCKET PLACEMENT FRM CF	1/8	1/8	NA	0	1 1/2	0	0	0	0					
DB	BOTTOM POCKET PLCMNT FROM BOTTOM HEM EDGE	1/8	1/8	NA	0	2	0	0	0	0					
FC	SLEEVE POCKET HEIGHT INCL FLAP	1/4	1/4	NA	0	5	0	0	0	0					
FD	SLEEVE POCKET WIDTH	1/4	1/4	NA	0	4 1/2	0	0	0	0					
FE	SLEEVE POCKET FLAP HEIGHT @ CENTER	1/4	1/4	NA	0	2 1/4	0	0	0	0					
FG	SLEEVE POCKET PLACEMENT DOWN SLEEVE	1/4	1/4	NA	0	5 1/2	0	0	0	0					
PT	BACK INSIDE POCKET WIDTH ALONG BOTTOM EDGE	1/2	1/2	NA	0	18 1/2	0	0	0	0					
PU	BACK INSIDE POCKET HEIGHT FROM HPS	1/2	1/2	NA	0	14	0	0	0	0					
1MT	BK BTTM WEARER'S LEFT PKT HEIGHT INCL FLAP	1/4	1/4	NA	0	7 1/2	0	0	0	0					
PV	BK BTTM WEARER'S LEFT PKT WIDTH	1/4	1/4	NA	0	9 1/4	0	0	0	0					
PW	BK BTTM WEARER'S LEFT PKT DEPTH	1/4	1/4	NA	0	4	0	0	0	0					
QC	BK BTTM WEARER'S LEFT PKT FLAP HEIGHT @ CENTER	1/8	1/8	NA	0	4	0	0	0	0					
QD	BK BTTM WEARE'S LEFT PKT FLAP HEIGHT @ SIDE EDGE	1/8	1/8	NA	0	2	0	0	0	0					
QE	BK BTTM MIDDLE PKT HEIGHT INCL FLAP	1/8	1/8	NA	0	7 1/2	0	0	0	0					
1RZ	BK BTTM MIDDLE PKT WIDTH	1/8	1/8	NA	0	6 1/2	0	0	0	0					
1RS	BK BTTM MIDDLE PKT DEPTH	1/8	1/8	NA	0	3 1/2	0	0	0	0					
1RT	BK BTTM MIDDLE PKT FLAP HEIGHT @ CENTER	1/8	1/8	NA	0	2 1/2	0	0	0	0					
1RU	BK BTTM MIDDLE PKT FLAP HEIGHT @ SIDE EDGE	1/8	1/8	NA	0	1 1/2	0	0	0	0					
1RV	BK BTTM WEARER'S RIGHT PKT HEIGHT INCL FLAP	1/4	1/4	NA	0	7 1/2	0	0	0	0					
1RW	BK BTTM WEARER'S RIGHT PKT WIDTH	1/4	1/4	NA	0	5 1/2	0	0	0	0					
1RX	BK BTTM WEARER'S RIGHT PKT DEPTH	1/4	1/4	NA	0	3	0	0	0	0					
1RY	BK BTTM WEARER'S RIGHT PKT FLAP HEIGHT @ CENTER	1/8	1/8	NA	0	2 1/2	0	0	0	0					
1SA	BK BTTM WEARER'S RIGHT PKT FLAP HEIGHT @ SIDE EDGE	1/8	1/8	NA	0	1 1/2	0	0	0	0					
1SB	BK BTTM PKTS PLACEMENT ABOVE BTTM HEM EDGE	1/8	1/8	NA	0	2 1/2	0	0	0	0					

**SPEC SHEET**

Version 1



<b>Article Code</b>	01D-06-400	<b>Description</b>	FIELD JACKET W/ MULTIPLE POCKETS				<b>Product Group</b>		Outerwear			
<b>Article Name</b>	HOLLINS						<b>Product Sub-Category</b>		Jackets			
<b>Created On</b>	08/30/17 8:37:49 AM	<b>Material</b>	CRINKLED NYLON				<b>Season</b>		2018 Winter			
<b>Last Modified</b>	09/27/17 9:00:12 AM	<b>Description</b>					<b>Life Cycle Stage</b>					



POM	Description	+ Tol	- Tol	Grade	S	M	L	XL	2X	3X					
1SC	INSIDE ZIPPER POCKET LENGTH	1/4	1/4	NA	0	5	0	0	0	0					
1SD	FRONT SIDES TAB WIDTH	1/8	1/8	NA	0	1	0	0	0	0					
1SE	FRONT SIDES TAB LENGTH	1/8	1/8	NA	0	3 1/2	0	0	0	0					
1SF	FRONT SIDES TAB PLCMNT BELOW HPS (TACKED END)	3/8	3/8	NA	0	15	0	0	0	0					
1NQ	HOOD EYELET PLACEMENT FROM NECK SEAM	1/8	1/8	NA	0	3 1/2	0	0	0	0					